



TEMPORARY PIT & TRENCH COVERS

- PROTECT OPEN PITS AND TRENCHES DURING INSTALL -

VicRoads has issued a Safety Alert, calling for the adequate protection of pits and excavations on all work sites.

Exposed pits and trenches create potential hazards to workers and members of the public, who face risk of injury from slipping, tripping or falling.

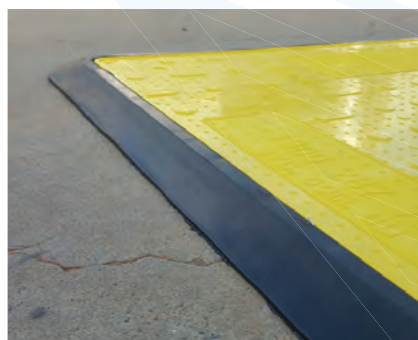
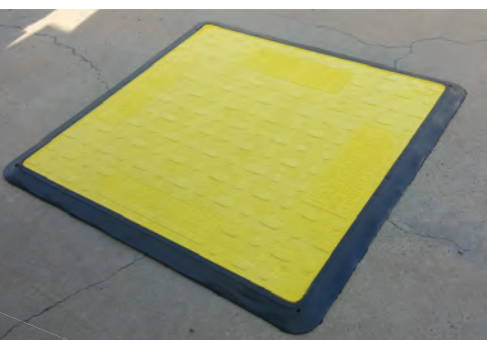
All ground openings must be covered immediately after being formed on site, using purpose-fit covers that are load-rated to bear the weight of people and equipment that may traverse the site.

SVC Civil's Temporary Pit & Trench Covers provide a convenient solution.



SVC TEMPORARY PIT & TRENCH COVER

- Used to cover exposed pits, manholes, trenches and footpaths
- 1200mm x 800mm unit suits max. opening width of 700mm
- Load-rated to max. weight of 800kg
- Lightweight 12kg unit is easy to move and manoeuvre



- 1100mm x 1100mm unit suits pit openings up to 900mm x 900mm
- Includes pedestrian-safe ramped rubber edging
- Lightweight 12kg unit is easy to move and manoeuvre

Send your enquiry via email to sales@svc.com.au or call the phone numbers listed below.



38 JAPADDY ST
MORDIALLOC 3195
1300 287 782

2 CHAFFEY ST
THOMASTOWN 3074
03 9460 3813

svc.com.au

